

TOPIC: GROUPS, NETWORKS, AND ORGANIZATIONS

- ◆ To understand social interactions & social functioning, sociologists will often study groups, networks, and organizations.

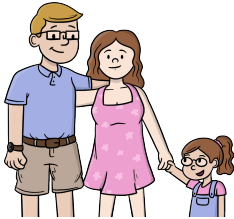


GUIDING QUESTIONS

- How much connection do we feel in different types of groups?
- How does the size of a group influence its functioning?

Group

Two or more people who interact regularly and share a sense of identity.



Ex: Friend groups, families

Network

A web of social ties or connections – may not interact regularly.



Ex: A graduating class, social media contacts

Connects individuals and possibly **groups**

Organization

A large, formal structure designed to achieve a specific goal.

Pearson

Ex: Pearson, schools, nonprofits

Consists of multiple **groups** and can be part of larger **networks**.