

## TOPIC: SCHIZOPHRENIA

### Schizophrenia

#### Schizophrenia

*\*Not complete DSM-5 criteria*

Psychotic disorder characterized by significant disturbances in thought, perceptions, emotion, & behavior.

#### ◆ Positive Symptoms

- Hallucinations: Perceptual experiences in the \_\_\_\_\_ of external stimuli.
- Delusions: Persistent beliefs that are \_\_\_\_\_ to reality (grandiose or paranoid).

#### ◆ Negative Symptoms

- \_\_\_\_\_ in behaviors, emotions & drives (e.g., emotional flatness, apathy, speech, self-care).

#### ◆ Disorganized Symptoms

- Disorganized Speech: Disruption in \_\_\_\_\_ skills.
- Disorganized Behavior: Unusual behaviors or movement (includes \_\_\_\_\_ behavior).

◆ **Diagnosis:** \_\_\_\_\_ or more symptoms for  $\geq 1$  month. Signs of disorder persist for at least 6 months.

◆ **Average age of onset:** \_\_\_\_\_ years old.

◆ **Lifetime Prevalence:** Occurs in approx. 0.5% of population.

### EXAMPLE

Answer the following about the symptoms of Schizophrenia.

a. List one positive symptom and describe it:

---

b. List one negative symptom and describe it:

---

c. List one disorganized symptom and describe it:

---

### PRACTICE

Which age range is the most common for age of onset of schizophrenia?

- a) 10 - 19 years old.
- b) 18 - 35 years old.
- c) 35 - 40 years old.
- d) 45 - 55 years old.

## TOPIC: SCHIZOPHRENIA

### Risk Factors

◆ Certain factors make schizophrenia more likely:

#### Genetics/Heritability:



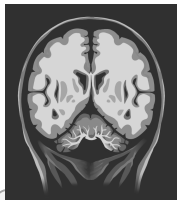
- ◆ \_\_\_\_\_ heritable; strongly supported by adoption and twin studies.
- ◆ No specific gene linked.

#### Stress:

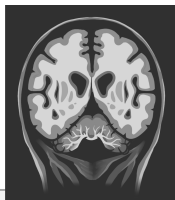
- ◆ *Recall:* Diathesis x Stress model.
- ◆ Stress (especially within the \_\_\_\_\_ environment) is associated with higher rates of schizophrenia.

#### Atypical Brain Structure:

- ◆ 2 brain abnormalities have been associated with schizophrenia; both lead to reductions in \_\_\_\_\_ matter.
1. Excessive synaptic \_\_\_\_\_ during adolescence.
  2. Enlarged \_\_\_\_\_.



Healthy brain



Schizophrenic brain

#### Prenatal/ Birth Complications:

- ◆ Maternal infections (including \_\_\_\_\_).
- ◆ Maternal malnutrition and stress.
- ◆ Lack of oxygen during birth.

### EXAMPLE

Which of the following statements regarding risk factors for schizophrenia are true?

- I) Schizophrenia is highly heritable.
  - II) Stressful life experiences can increase the risk of schizophrenia.
  - III) Schizophrenia has been associated with complications during pregnancy and birth.
- a) I & II.                      b) II & III.                      c) I & III.                      d) I, II, & III.

### PRACTICE

Which neurological atypicality is associated with schizophrenia?

- a) Increased activity of the amygdala and occipital cortex.
- b) Increased blood flow to the prefrontal cortex.
- c) Increased gray matter volume.
- d) Enlarged ventricles.