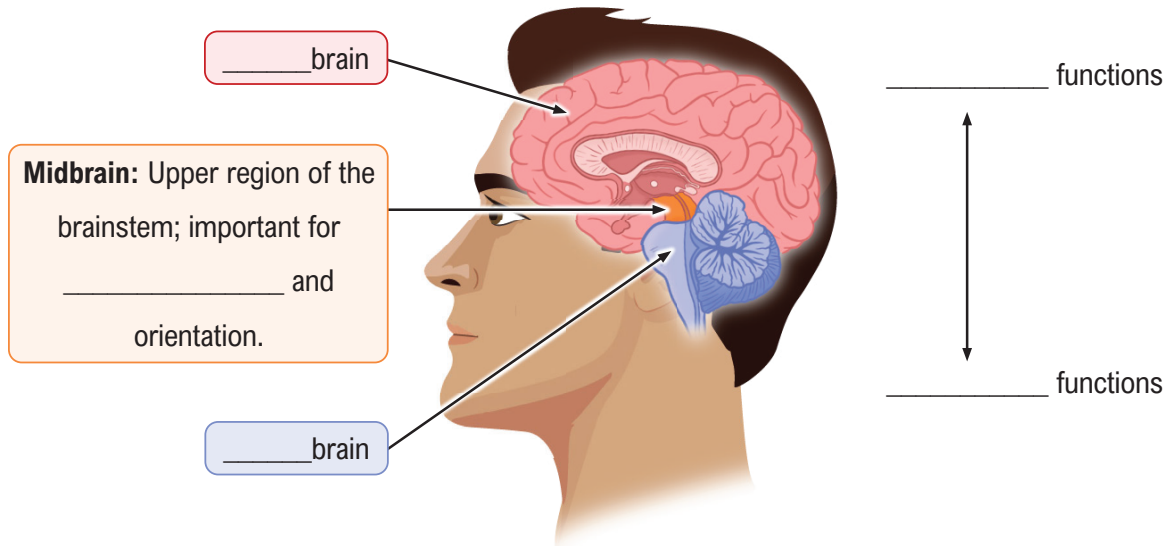


## TOPIC: INTRODUCTION TO THE BRAIN

### Organization of the Brain

◆ The brain can be organized into \_\_\_\_ major divisions:



### EXAMPLE

Arrange the major divisions of the brain in order of the complexity of function they control.

\_\_\_\_\_ → \_\_\_\_\_ → \_\_\_\_\_

Midbrain  
Forebrain  
Hindbrain

### PRACTICE

Which of the following statements is **correct**?

- a) The hindbrain is responsible for the most evolutionarily complex functions (ex: logic)
- b) The midbrain is the uppermost portion of the brain.
- c) The forebrain is responsible for the most evolutionarily simple functions (ex: breathing).
- d) The forebrain is responsible for the most evolutionarily complex functions (ex.: logic).