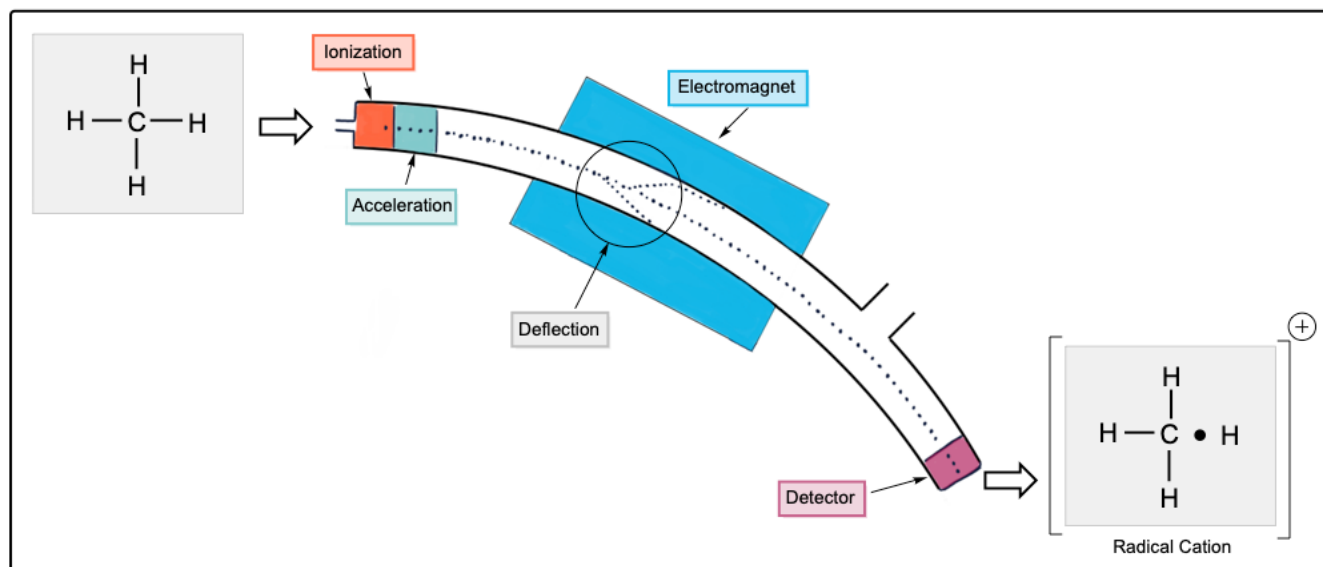


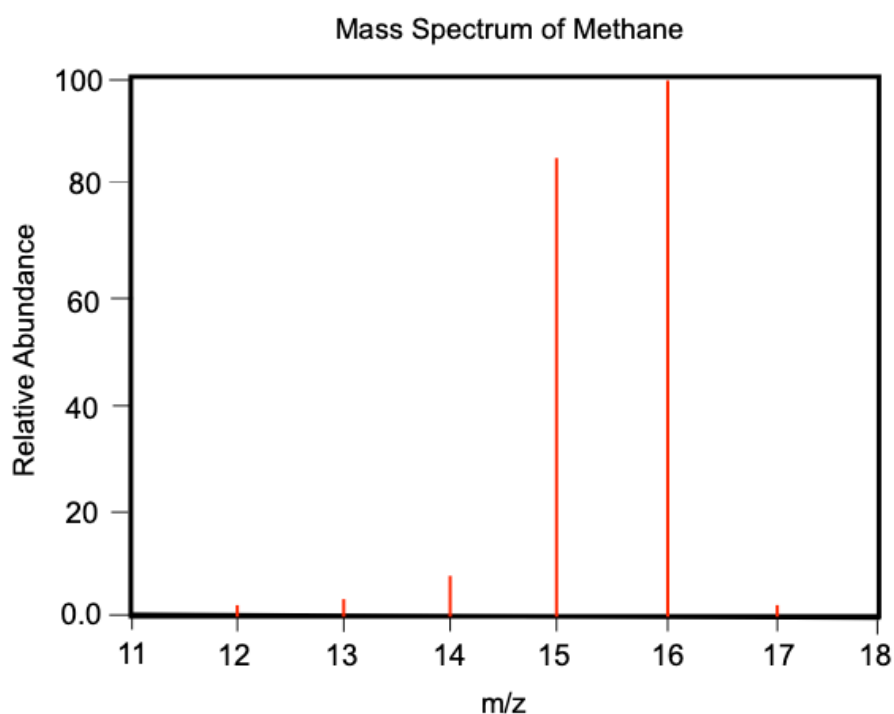
CONCEPT: MASS SPECT- INTRODUCTION

Mass Spectrometry is usually accomplished through a technique called *electron impact ionization* (EI)



Electrons are beamed at molecules, generating high energy intermediates called **radical cations**

- This is known as the **molecular ion** _____ or as the parent ion.
 - Only *fragment cations* are deflected by the magnetic field, the smaller ones more than the bigger ones.
- ☐ Detects the mass-to-charge ratio _____, which means that it detects the MW of cationic fragments



m/z	% abundance
16	100 (base peak)
15	85
14	9.2
13	3.9
12	1.0