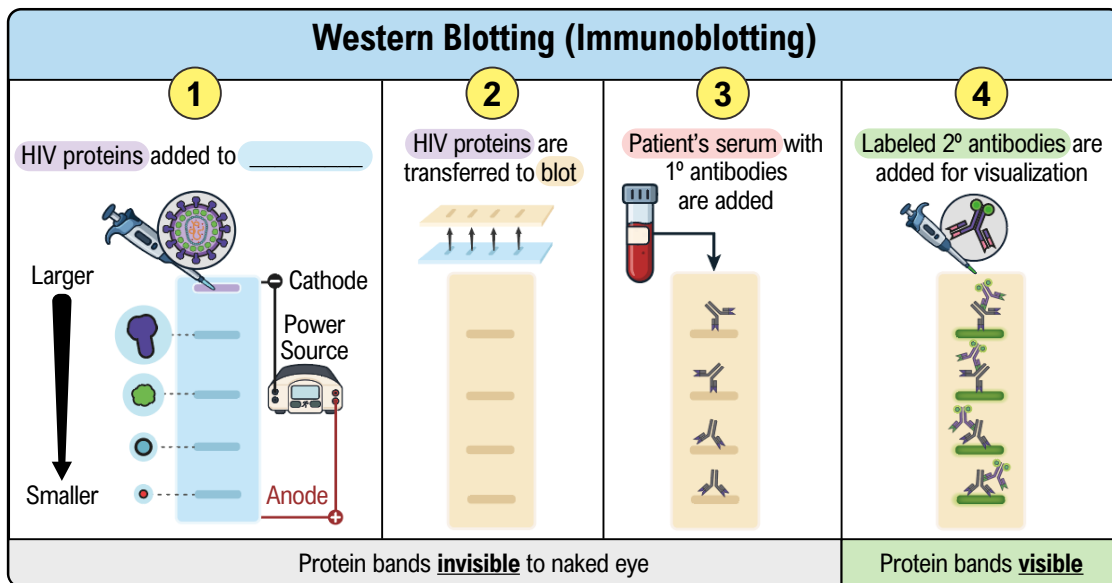


## TOPIC: IMMUNOASSAY: WESTERN BLOTTING

### Immunoassay: Western Blotting

◆ **Western Blotting (Immunoblotting):** method that *separates* \_\_\_\_\_ then detects them with *antibodies*.

- *Recall:* gel electrophoresis: technique used to separate molecules using a 3D gel matrix.
- **SDS-PAGE** (**S**odium **D**odecyl **S**ulfate-**P**oly**A**crylamide **G**el **E**lectrophoresis) → separates based on size.
- After SDS-PAGE, proteins are transferred to a blot & visualized using *labeled* \_\_\_\_\_.



### PRACTICE

All of the following immunoassay testing techniques are paired with their correct characteristics except which of these answers?

- a) Fluorescent antibody test – microscopy.
- b) ELISA – radioactive label.
- c) Western blot – gel electrophoresis.
- d) All of the above are matched correctly.

### PRACTICE

Which of the following immunoassay techniques would be the best for screening thousands of specimens for COVID-19?

- a) Fluorescent antibody tests.
- b) Western blotting.
- c) ELISA.
- d) None of the above.