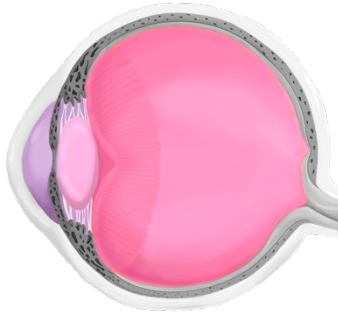


TOPIC: OPTIC COMPONENTS

- *Recall:* Optic components of the eye transmit & _____ light.

1. Aqueous Humor: fills the _____ portion.

- Liquid.
- Made by the _____ body.
- Nourishes the lens & cornea.



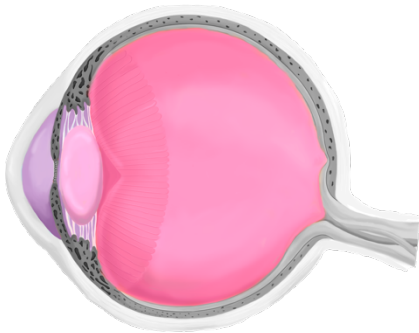
3. Vitreous Humor (Body): fills the _____ portion.

- Gel.
- Made during fetal development.
- Helps maintain eye _____.

2. Lens: transparent, flexible _____ that focuses light.

- ____vascular.
- 2 Layers:
 1. Lens Epithelium: made of _____ epithelial cells.
 2. Lens Fibers: contain _____ protein.

EXAMPLE: Glaucoma is a condition where the optic nerve is damaged due to increased internal pressure in the eye. Increased pressure inside the eye pushes on the retina, causing the tissue to die and vision to become patchy. One cause of glaucoma is a buildup of excess fluid in the eye. Based on their properties, which fluid of the optic components is more likely to build up?



PRACTICE: Cataracts are caused by changes to the crystallin proteins in the eye. Based on this information, what structure would you expect to be directly affected by cataracts?

- a) Aqueous humor.
- b) Lens.
- c) Vitreous humor.
- d) Both A and C are correct.