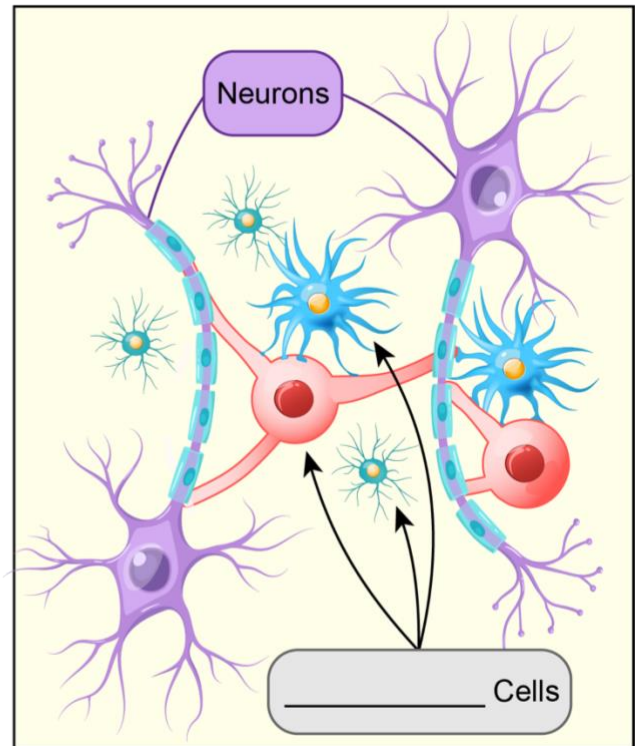
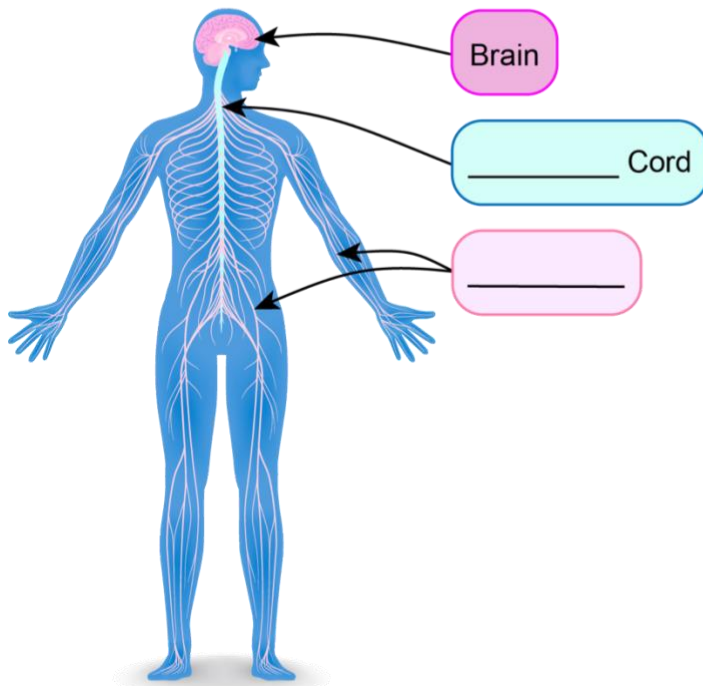


TOPIC: INTRODUCTION TO NERVOUS TISSUE

- **Nervous Tissue:** specialized to generate & carry _____ impulses throughout the body.
- Located in the _____, spinal cord, & nerves.
- Composed of _____ main types of cells:
 1. **Neurons:** conduct electrical impulses.
 2. **Neuroglia (glial cells):** *Nonconducting* cells that support, insulate, & _____ delicate neurons.
 - The term “neuroglia (glial cells)” encompasses multiple cell types; not one unique type of cell.



PRACTICE: If a sensory nerve running from the hand to the spinal cord is severed, you will lose feeling in your hand.

What statement best describes the reason for this?

- a) The electrical impulse can no longer be conducted from the hand to the spinal cord.
- b) The neurotransmitter molecules can no longer travel from the hand to the spinal cord.
- c) The neuron can no longer transmit the signal from neuron in the hand to the neuroglial cells in the spinal cord.
- d) The neuroglia cells can no longer transmit the signal from the hand to the spinal cord.

PRACTICE: Which of the following is NOT a function of neuroglia?

- a) Protecting neurons.
- b) Supplying nutrients to neurons.
- c) Regulating the composition of interstitial fluid.
- d) Conducting electrical impulses.