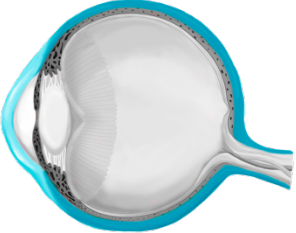
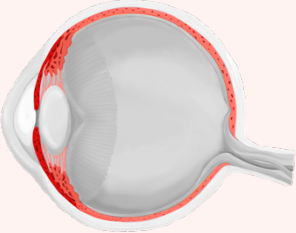
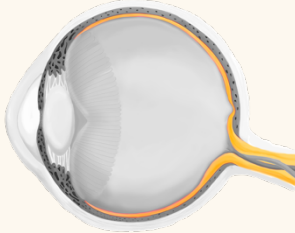
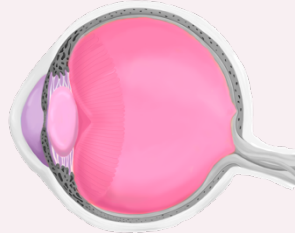


TOPIC: STRUCTURE OF THE EYEBALL

- **Eyeball:** irregularly shaped hollow _____ made of 3 layers that surround the optic components:

Fibrous Layer	Vascular Layer	Inner Layer	Optic Components
<ul style="list-style-type: none"> • Outer layer. • Structure, protection & _____ attachments.  <p>- Cornea & Sclera.</p>	<ul style="list-style-type: none"> • Middle layer. (Uvea) • Controls light & _____ supply.  <p>- Iris, Ciliary Body & Choroid.</p>	<ul style="list-style-type: none"> • _____. • _____ sensitive cells & nerve cells.  <p>- Retina.</p>	<ul style="list-style-type: none"> • Inside of the eye. • _____ & focuses light.  <p>- Aqueous & Vitreous Humors, Lens.</p>

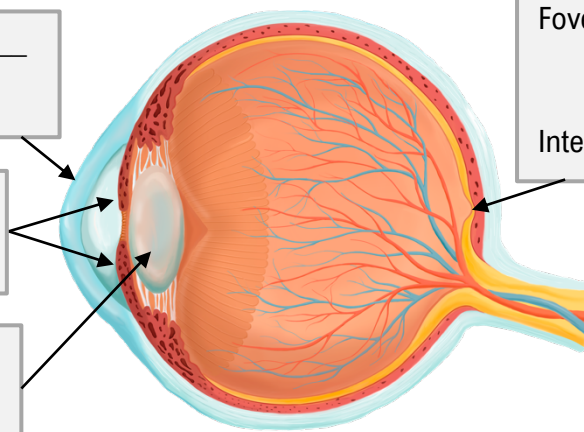
EXAMPLE: In the following image, four important structures of the eye are labeled. Based on their location, identify which layer of the eyeball they are a part of. Then, identify how each structure primarily interacts with light.

- If the structure transmits light, mark it with a “T”.
- If the structure controls light entering the eye, mark it with a “C”.
- If the structure absorbs and responds to light, mark it with an “R”.

Cornea: _____
Interacts with light: _____

Iris: _____
Interacts with light: _____

Lens: _____
Interacts with light: _____



Fovea Centralis (center of retina): _____
Interacts with light: _____

TOPIC: STRUCTURE OF THE EYEBALL

PRACTICE: Identify the layer or layers of the eye that function to protect the eye.

- a) Fibrous Layer. b) Vascular Layer. c) Inner Layer. d) Both A and C are correct.